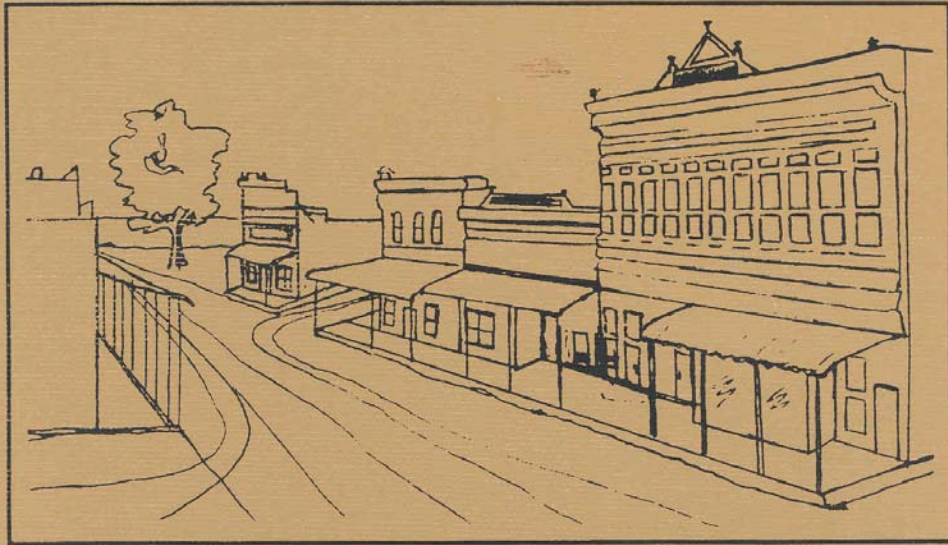


# Centennial History



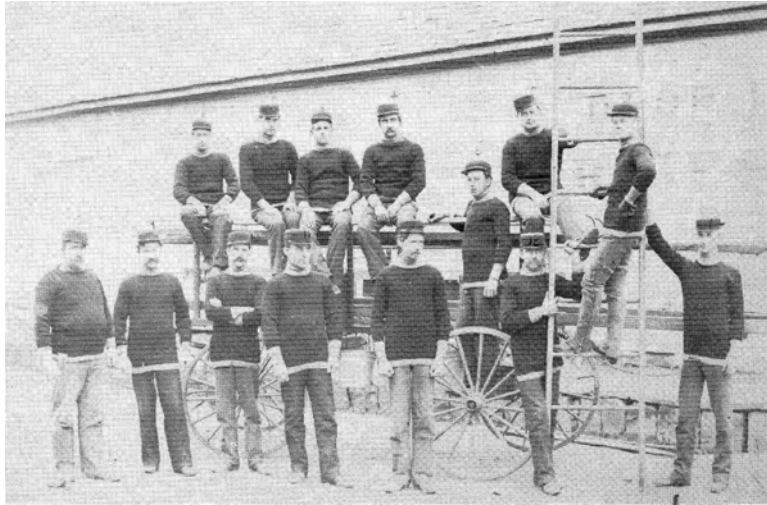
MAIN STREET LOOKING WEST — TURN OF CENTURY (1900)

Prairie Grove, Arkansas

1888-1988

By David Stills - 1988

## FIRE DEPARTMENT HISTORY



New Bucket and Ladder Truck, early 1900s

Prairie Grove Firemen pose with new bucket and ladder wagon,

Front Row: M.M. Collier, Tom Dixon, Unidentified, D. N. McCormick, Unidentified, and Clem Cummings.

Back Row: L. L. Baggett, Sam Davis, Tom Hart, Unidentified, Charley Nixon, Van Carl and Jim Nixon.

(Park Photo)

Many buildings in early Prairie Grove were lost by fire before the advent of city water supplies and motorized vehicles. Bucket brigades had the almost futile task of extinguishing fires by carrying buckets of water and using dynamite to prevent spread of the flames.

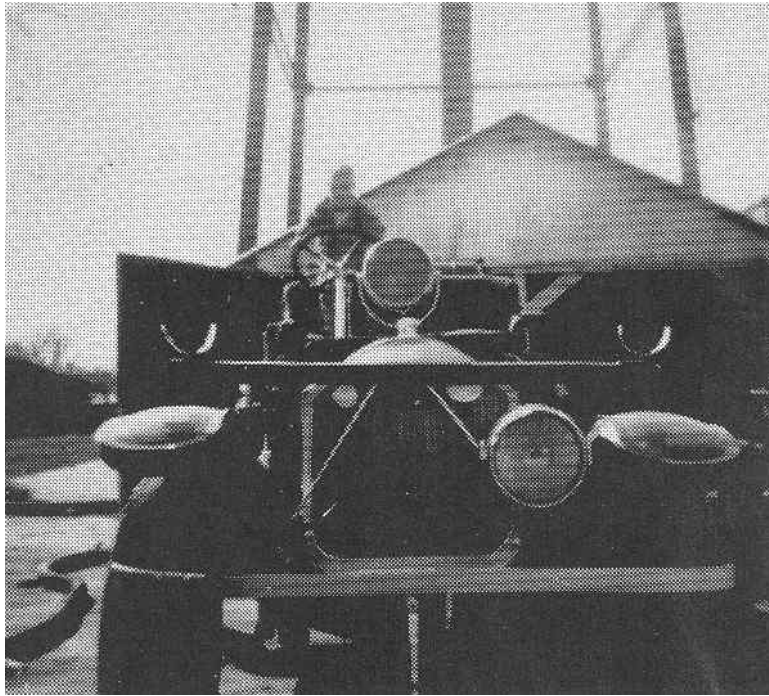
In the early 1900s a Volunteer Fire Company was organized, and a pull-type vehicle equipped with ladders and buckets, was used. (A picture of this vehicle will be found elsewhere.)

In 1922 the town officials organized a fire company to have charge of the new Chemical Fire Extinguisher which was ordered.

Members of the company were:

Isham Porter, chief; Arthur McCormick, assistant chief; S. J. Campbell and J. C. Parks, hosemen James K. Woodruff, Lake Hannah and Charles Woolverton, ladder men. "These officials were authorized to call to their assistance such help as is needed in case of fire.

The following quote is from the Prairie Grove Herald of December 12, 1922: "Of course this apparatus (the Chemical Fire truck) is not of the largest pattern, but it will be a great help in fighting fires. It has a 50-gallon tank, and will throw a stream 60 feet high, and carries 100 feet of hose. It can be recharged in a few minutes. The apparatus used at present is to be worked over and made more efficient and easier to handle."



American-LaFrance Fire Truck used in Prairie Grove for a time in the 1930s

The next fire-fighting equipment added to the system was described as a chemical extinguisher of fires with two 35 gallon tanks mounted on a one ton Ford chassis." It was supplied with "200 feet of hose and an ample supply of ladders, hooks, axes, bars, etc."

As time passed, the Prairie Grove City Officials cooperated with the Fire Department in *expanding and purchasing more efficient equipment*. As this History is being compiled in 1988, the Prairie Grove Fire Department is above average in personnel and equipment, surpassing most towns of this size in the area.

From its original location in the Prairie Grove Garage (where the Farmers Hardware Paint Store is now located), the Fire Department was moved to the old city tool house which had been moved to the lot south of the City Water Office, for future storage of trucks. In 1952 a contract was let for building a new fire station and city building by adding onto the south and west of the water office.

About 1973 the Prairie Grove Fire Department proudly occupied its beautiful new facility on the East side of South Neal Street, its present location.

Current officers of the Prairie Grove Fire Department are: Randall Rieff, Chief; Tommy Smith, Captain; Randy Tyree, Captain; David Stills, Secretary-Treasurer; Harold Bottoms, Inspection Officer.

Present firemen are: Ken Aman, Doug Bartholomew, Harold Bottoms, Tom Calvert, Mark Cook, Larry Crawley, J. L. Flynt, Tim Franks, Gordon Hart, Dwayne Higgenbotham, Roger Hulse, Bobby King, Loyd Luginbuel, Stacy Luginbuel, Murphy Pair, Randall Rieff, Tom Smith, Tom Tom Smith, Jamin Snarr, David Stills, John Teekell, Randy Tyree and Roger West.

A partial list of those who have served as Prairie Grove Fire Chief includes: Isham Porter, Arthur McCormick, Jimmie Smith, Billy Harp, Joe Parks, James Fidler, Bobby Rice, Lee Couch and Randall Rieff, present chief.



Current apparatus in use by the Prairie Grove Fire Department includes the following:

Engine 31: 1952 Pumper/ Tanker, 1500 g.p.m., 3000 water tank;  
Engine 35: 1980 Brush Pumper, 300 gal. water tank;  
Engine 36: 1969 Pumper, 500 g.p.m., 500 gal. tank;  
Engine 39: 1971 Pumper, 500 g.p.m., 500 gal. tank;  
Engine 38: 1973 Rescue/ Pumper, 500 g.p.m., 500 gal. tank, rescue equipment;  
T-1: 1977 Tanker, 550 g.p.m., 5600 gal. tank;  
T-2: 1979 Tanker, 6300 gal. tank.

The ISO Fire Rating changes for the City of Prairie Grove were: from 8th to 7th in 1973; and from 7th to 6th in 1950. These ratings affect rates charged for fire insurance. Prairie Grove Rural Fire Association, Inc. was incorporated in 1969 on a petition of Lloyd Rouse, Everett Hart, Wayne Hall, Lavonne Hall, Glenn Curtsinger, Earl Cates, Bob Ray, Chester McKee, Bucky Morris, Dean Ramsey, Ellis Thurman and C. L. Ake.

## RURAL FIRE ASSOCIATION

The Rural Fire Association made memberships available to rural residents in its territory and money received from these dues was used to purchase a specially equipped rural truck. The truck was to be housed in the Prairie Grove Fire Station and manned by Prairie Grove Firemen.

Board Members of the Rural Fire Association are: Everett Hart, president, Dan Castor, Philip Clement, Bucky Morse, Dale Quinton, Earl Rieff and A. C. Williams. Currently the Rural Association has a membership of 1300 plus.

Since August 1985 the Farmington Fire Department has been working in conjunction with the Prairie Grove Rural Fire Association and the Prairie Grove Fire Department to provide improved fire protection to the rural area surrounding the two cities. In 1985, the Rural Fire Association placed a pumper, and in 1987 a 5600-gallon tractor/ trailer tanker in the Farmington Fire Station. These units are manned by Farmington Firemen and respond to rural fires in the area. This arrangement has resulted in improved response times and greater manpower resources at the fire-scene. All calls now directed to either the Farmington or Prairie Grove Fire Departments will be answered simultaneously by both departments. This results in automatic mutual aid for both cities, in addition to the rural areas.

The Prairie Grove Fire Department provides heavy extrication services for the Western part of Washington County. This includes the following areas: Prairie Grove, Farmington, Lincoln, Hog Eye, Cove Creek, Strickler, Morrow, Evansville, Summers and all the area's Surrounding these communities.

The Prairie Grove Fire Station is the location of the Paramedic Ambulance for the Western part of Washington County. In August 1987, Central Emergency Medical Service placed an ambulance in the Prairie Grove Fire Station to support the City of Prairie Grove's request for paramedic-level care. This area is now provided with 24-hour-a-day paramedic ambulance care.

## CURRENT EQUIPMENT of the Farmington / Lincoln & Prairie Grove Fire Departments









